



3 Bedrooms



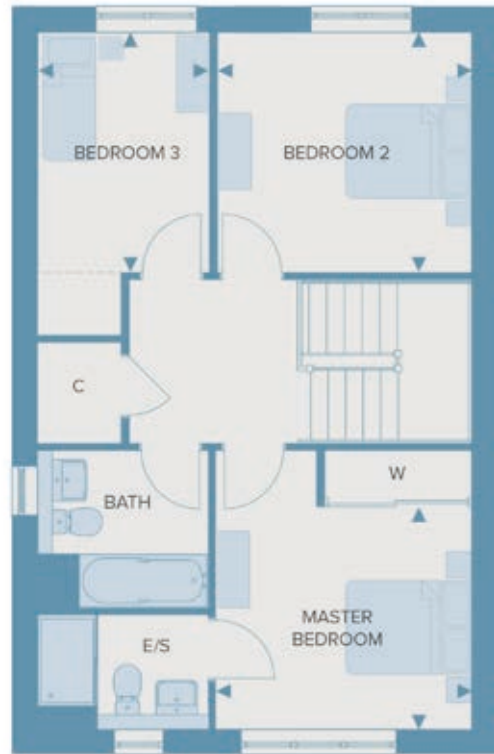
2 bathroom



Garage to
specific plots



2 Allocated
parking spaces



Total internal area 104.8m² 1128sq.ft

Ground Floor

Living Room	4.15m x 3.63m	13'7" x 11'1"
Kitchen/Dining	5.70m x 3.13m	18'9" x 10'3"
Cloakroom	1.90m x 1.04m	6'3" x 3'5"

First Floor

Bedroom 1	3.36m x 2.93m	11'1" x 9'7"
Bedroom 2	3.33m x 2.28m	10'11" x 10'5"
Bedroom 3 / Study	2.28m x 3.17m	7'6" x 10'5"
Ensuite	2.25m x 1.30m	7'5" x 4'3"
Bathroom	2.05m x 2.07m	6'9" x 6'9"

Made for life.